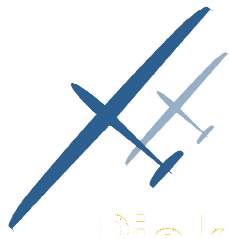


Annual General Meetings



The annual general meeting for Piako Gliding Club will be held on 24 June 2017 at 4:00 pm (after flying).

The Executive Committee will be decided for the upcoming year as well as setting the club fees for 2017-2018.

Various committee members will present their annual reports. The AGM is your opportunity to have direct input into the running of

your club.

At time of publication, I am not aware of any remits for this year. Remits must be sent to the Hon. Secretary in time to be circulated to members 2 weeks prior to the meeting.

ton on 9 to 11 June. Our president, Iggy Woods, will be the official PGC delegate. Contact Iggy if there are any issues you would like him to bring up at GNZ on our behalf.



Gliding New Zealand are holding their annual conference and AGM in Welling-



While we are in the mood for AGM's, the Matamata Soaring Centre will hold their AGM on 1 July at the clubhouse. The Soaring Centre owns the clubhouse and bunkrooms at Matamata and runs many of the gliding events at the airfield.

Inside this issue:

AGM's	1
Training Glider	1
Windfarm	2
Security Reminder	2
PGC Branded Clothing	3
GNI refurbish	4
Payment Policies	4

Training Glider

Members had a robust discussion of twin glider options at a meeting on 5 Feb.

We did consider options to purchase two gliders from Tauranga, or one Puchacz plus an option to purchase the second one in the future. In the end, Tauranga decided to make only one



Puchacz available at that price.

We have now completed the purchase of GEO from the Tauranga club. She is ours!

This is a good outcome for our club. Although, we

must continue to put up with inconvenience of weight limits in GPC, we save the money for other improvements (such as updating our tow plane, or higher performance 2 seat glider in a few years).

Proposed Wind Farm

Ventus Energy is about to complete investigations and submit a resource consent application for the proposed 100MW Kaimai Wind Farm on the ridge and Tirohia spur between Te Aroha and Paeroa.

The proposal is to install up to 26 wind turbines on farmland at the northern end of the Kaimai Ranges. For the proposed turbines, mast height plus 1/2 rotor diameter comes

to almost 600 ft above ground. The final number of turbines, exact location and size will be determined following further investigation and consultation.

More information can be found at the website: kaimaiwind.nz

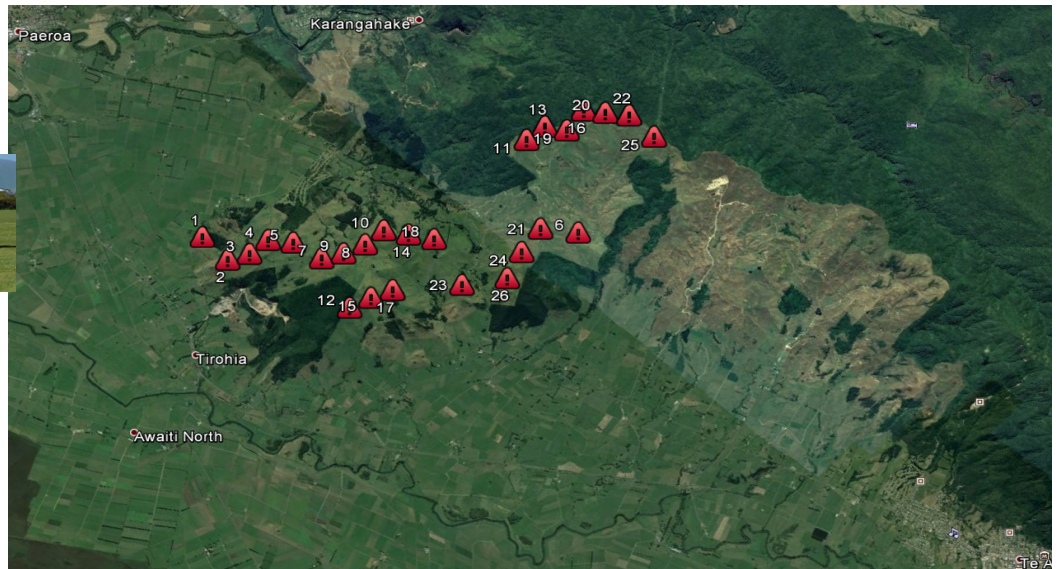
This project could have a devastating impact on our ability to traverse the ridge, so we are planning



to get involved in the consent process.

In the meantime, be on the lookout for wind monitoring masts that may be erected in this area.

Proposed Turbine Locations



Security Reminders

There have been several instances lately of clubhouse and/or hangar left open. Luckily we do not seem to have suffered any losses or damage to our stuff.

However, there have

been thefts reported at the airfield in the last year, and it is important that we take all reasonable precautions to keep our premises secure.

Clubhouse: Bar door shut and locked, doors and

windows secure (including kitchen and loos) and alarm armed.

Hangar: Hangar doors and lean-to doors shut. Locking bars in place, with retaining pins in place. Alarm activated.



PGC branded clothing

We are arranging for PGC branded shirts and hats to be available to interested members.

Shirts come in 3 styles:

- Short sleeve polo with pocket
- Long sleeve without pocket
- Ladies short sleeve polo

(sorry, no long sleeve with pocket)

Shirts details:

- 65% Polyester for durability, and 35% Cotton for comfort,
- 210gsm pique knit fabric,
- Knitted collar with reinforced herringbone tape on inside neck seam,
- 3-button placket for Adults,
- Straight hem with side splits,
- Easy care, reduced pilling fabric,

- Complies with standard AS/NZS 4399:1996 for UPF Protection,
- Royal blue colour

Hats are white, "bucket" style. Sizes: Medium/Large/XLarge

Costs depend on size of the order, but are expected to be about \$40 for shirts and \$27 for hats.

Let me know by 25 June if you wish to purchase a shirt or a hat. Email to dave.dennison@xnet.co.nz

Specify shirt style, shirt size, hat size.



Size Guide

ADULTS	S	M	L	XL	2XL	3XL	4XL **	5XL **	
B	53.5	56	58.5	61	63.5	66.5	70	73.5	
E	70	72.5	75	77.5	80	81	82	83	
** short sleeve only									
LADIES	8	10	12	14	16	18	20	22	24
B	46	48.5	51	53.5	56	58.5	61	63.5	66
E	62	64	66	68	70	72	73	74	75



Refurbishment Of GNI

The refinishing project for our Club Astir, GNI, is well underway.

A dedicated team of people, led by Malcolm Piggot, have been busy removing badly cracked gelcoat from the wings.



This is a great example of what Club Spirit can accomplish. Thanks to all the volunteers!

We look forward to seeing NI back in the air, with bright shiny wings and improved gliding angle.



Flight Payment Policies

For information of new members, and reminder to old members, here is a summary of some of our policies relating to payment for tows and gliders.

All tows and club gliders should be paid on the day. No credit! It's not that we don't trust you; we just don't have the systems to keep track of what people owe.

You should pay each day before the duty pilot wants to go home, even if you are staying the night or just popping into town for dinner. If you are off on a big flight, where you might land out or come home late, consider paying for your tow before you leave.

Acceptable payment types are: EFTPOS, cheque, voucher, or

cash (we don't keep change on hand).

Sometimes we arrange to send invoices for groups (e.g. ATC), but this is by special arrangement only.

VISA, Mastercard, etc are NOT allowed from members, even if they are debit cards. They will work, but the club incurs extra charges. We can, reluctantly, accept these cards from guests if that is all they have.

You owe what the computer says you owe. Don't just leave the amount of money that you think you owe. Make sure that you, or the duty pilot, have the correct information entered in the computer.

Check flights, BFR's etc are charged at normal members'

rates.

Members of other gliding clubs, including overseas clubs, are charged at members rates. We hope they will do the same for us when we go travelling.

Associate members and guests of members can fly a few times each year at members' rates.

If for some reason you can't pay on the day [e.g. I left my wallet in my other trousers ☹], contact the treasurer to make alternative arrangements. These could be pay next day at the club, or direct bank deposit. This should be a very rare occurrence.

Following these policies will greatly ease the burden on duty pilots and the club treasurer!